

# Weigh Right Programme

Safer roads

Smarter regulation

A level playing field for industry



# Problem Definition



## Problem definition

- Current weight enforcement processes disrupt the journeys of large numbers of compliant vehicles because of poor targeting capability
- Compliant operators are subsidising non-compliant operators, who are not paying their fair share
- We only collect information about those vehicles that are pulled in
- The New Zealand public continue to be exposed to the safety risk of overweight vehicles

# System Configuration

## Screening Equipment

Vehicle screening system  
based on allowable weight  
(VDAM/ HV Permits)  
Overloaded? Yes/No?

Screening Automatic  
Number Plate Recognition



Pull in variable  
message sign



Weigh in Motion

\*Distances not to scale



# On Road Infrastructure



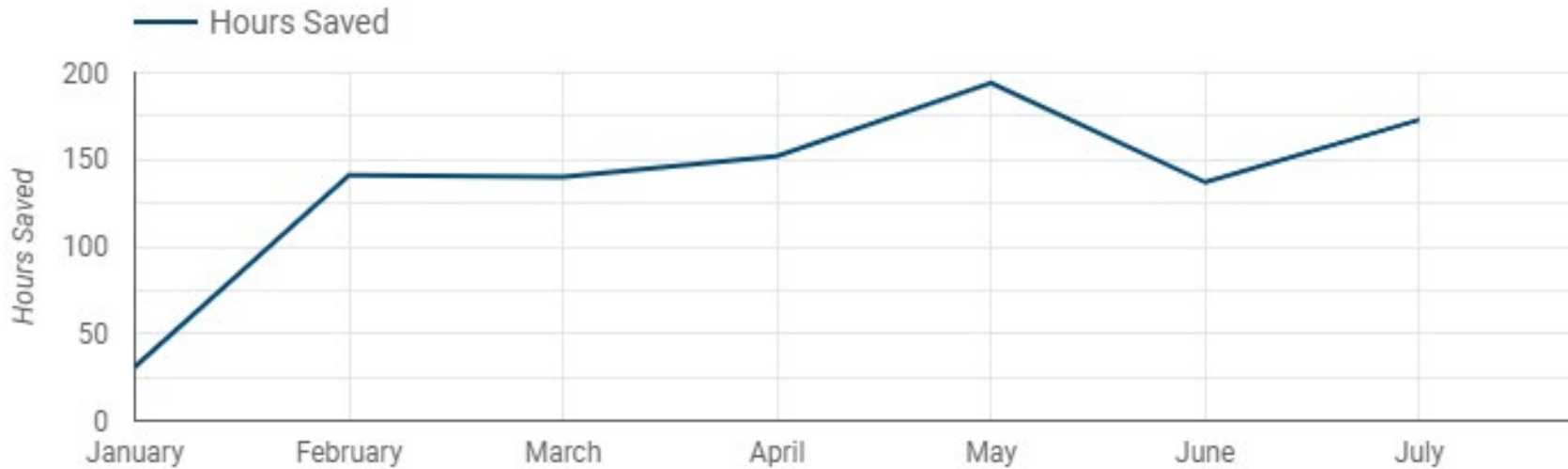
# Outcomes Delivered



## Programme benefits

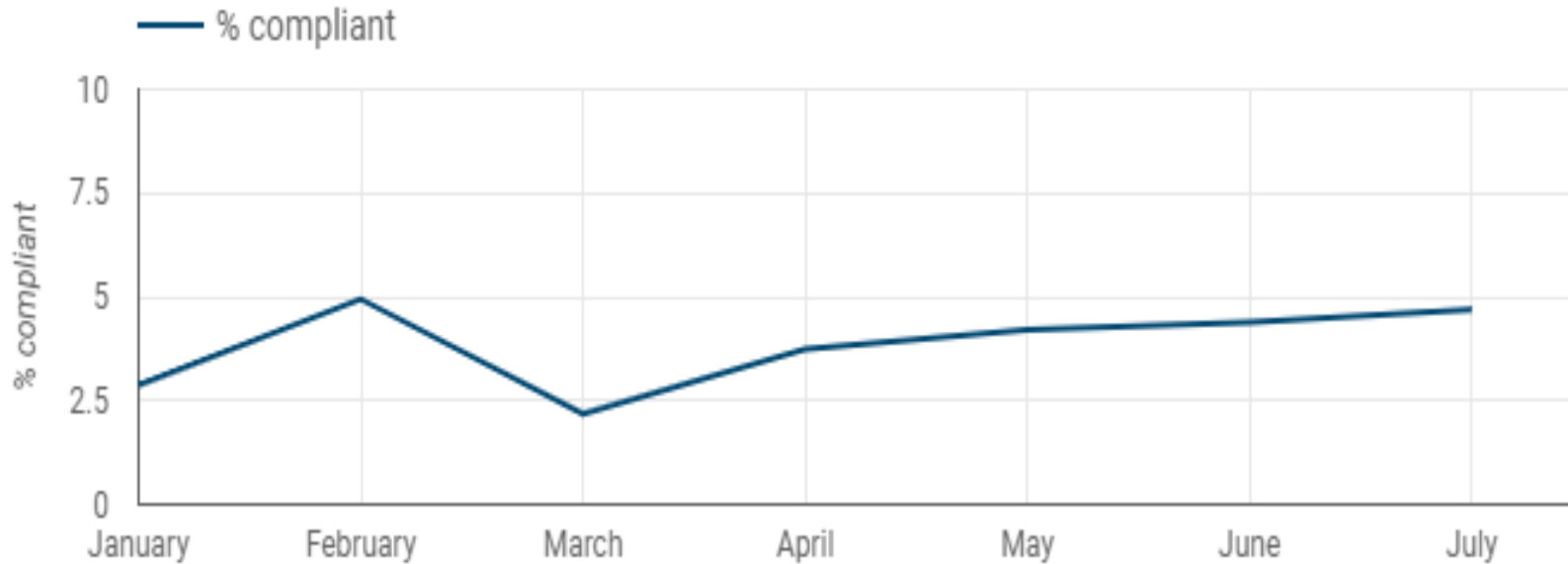
- Improved road safety
- Targeted weight enforcement
- A level playing field for industry
- All operators pay their fair share of road maintenance
- Technology designed and built with future compliance options in mind
- Savings for compliant operators

# Time Saved Through On-road Screening



Hours saved for transport operators by allowing weight compliant vehicles to continue their journey uninterrupted.

# Weight Compliant Vehicles Stopped



The percentage of weight compliant vehicles stopped.

# 2019/20 Programme Development

## Tranche 1 2019/20:

Glasnevin, North Canterbury

## Tranche 2 2020/21:

Paengaroa, Bay of Plenty

Ohakea, Manawatu

Taupo

Rakaia, South Canterbury

## Tranche 3 2020/21:

Napier Port

Tauranga Port

Stanley Street

## Tranche 4 2020/21:

MacKays Crossing, Kapiti Coast

Bombay, South Island

North Shore, Auckland

Marsden, Northland

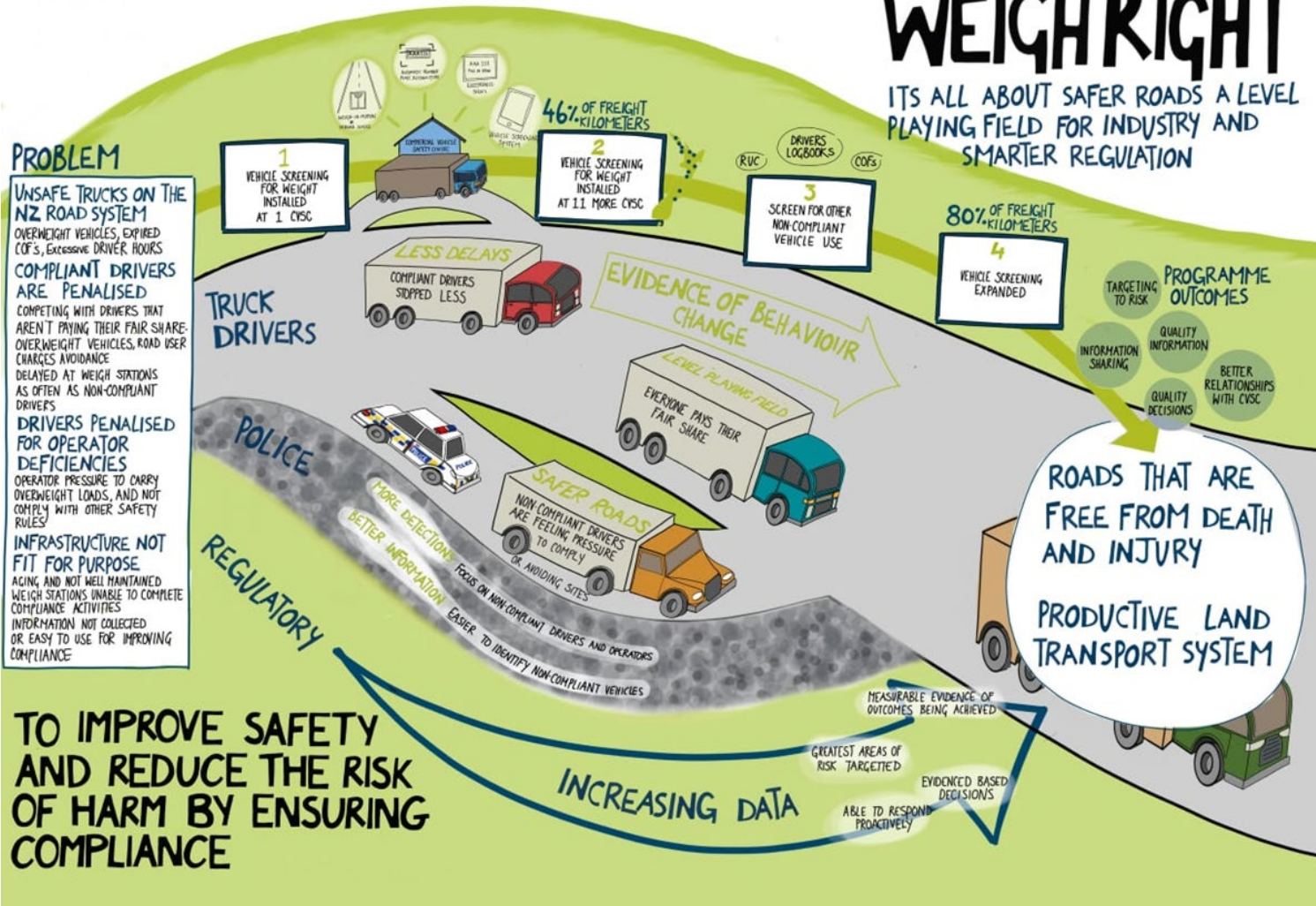




# Future Programme Development

## WEIGH RIGHT

ITS ALL ABOUT SAFER ROADS A LEVEL PLAYING FIELD FOR INDUSTRY AND SMARTER REGULATION





[weighright@nzta.govt.nz](mailto:weighright@nzta.govt.nz)  
[nzta.govt.nz/weigh-right-programme](https://nzta.govt.nz/weigh-right-programme)