



IRTENZ Conference

August 2019

TEAM:

8,079

BRANCHES:

260

COUNTRIES:

24

NZ, Australia, USA, Canada, Mexico, Chile, China, Hong Kong, Taiwan, Singapore, Thailand, Vietnam, Netherlands, Belgium, France, Germany, Italy, Romania, Poland, Ukraine, Russia, United Kingdom. Malaysia and Japan added in F19.



EUROPE

2,648 TEAM MEMBERS
41 BRANCHES

ASIA

384 TEAM MEMBERS
21 BRANCHES

THE AMERICAS

896 TEAM MEMBERS
65 BRANCHES

AUSTRALIA

1,789 TEAM MEMBERS
55 BRANCHES

NEW ZEALAND

2,362 TEAM MEMBERS
78 BRANCHES



35,000-40,000 CUSTOMERS:



**679,225 M² OF WAREHOUSING
IN 43 SITES**



**217 TRANSPORT CROSS-DOCK /
AIR & OCEAN LOCATIONS**



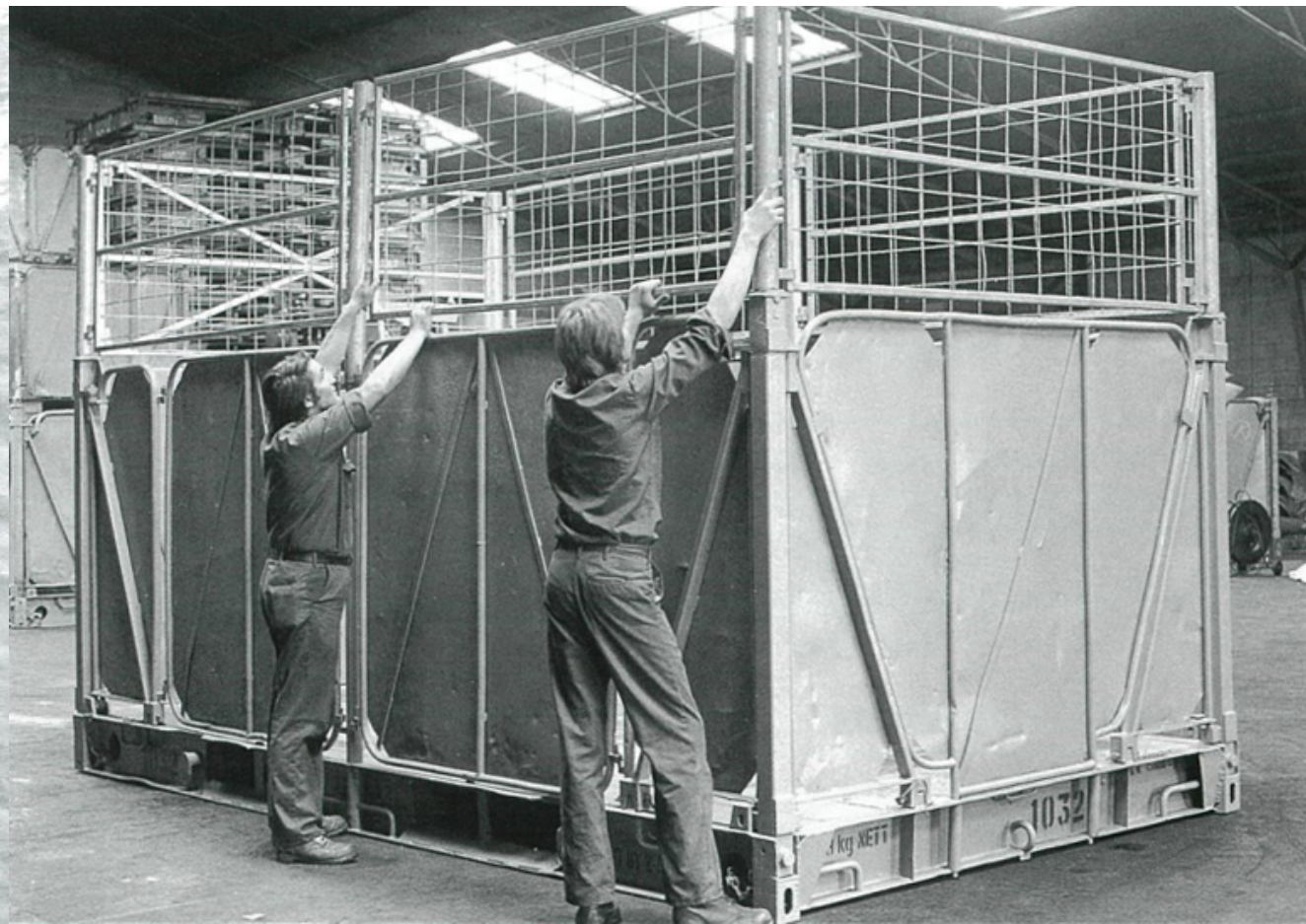
1,506 OWNER DRIVERS

From the beginning...

**FAIRER
REFLECT**



Seafreighters Extensions – 70's



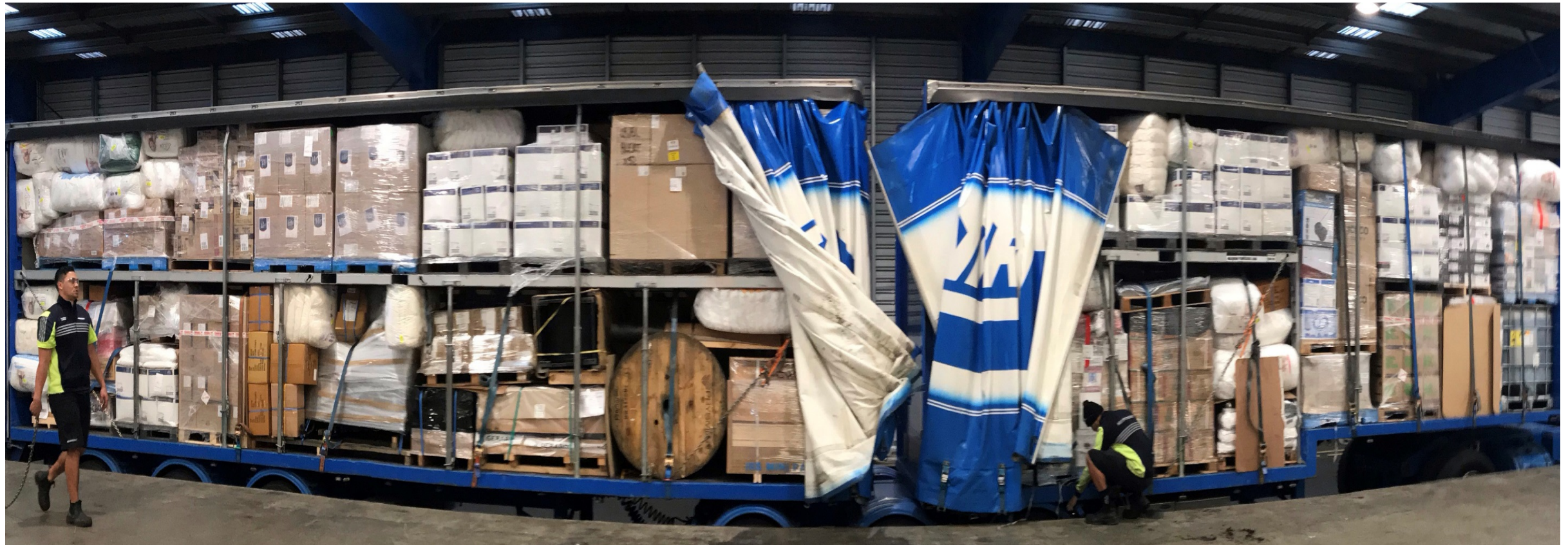
Over-dimensional Containers – 80's



The Evolution of Road Transport



The Changing Face of Transport





Continue to push boundaries – not a 'one size fits all' approach

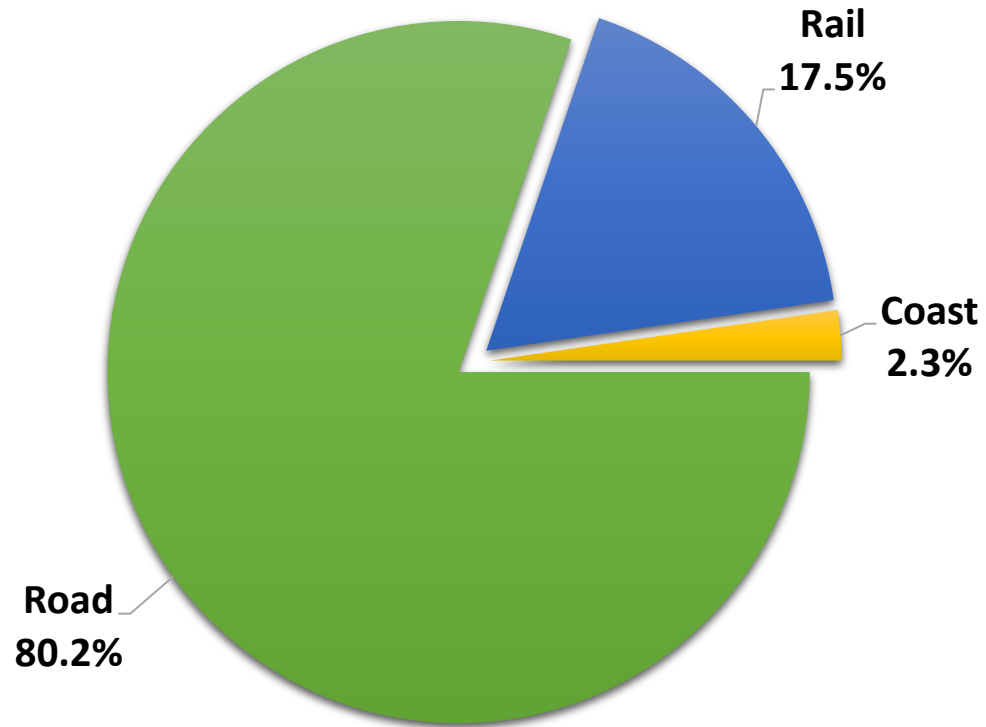


NZ is largely made up of
small to medium sized
enterprise

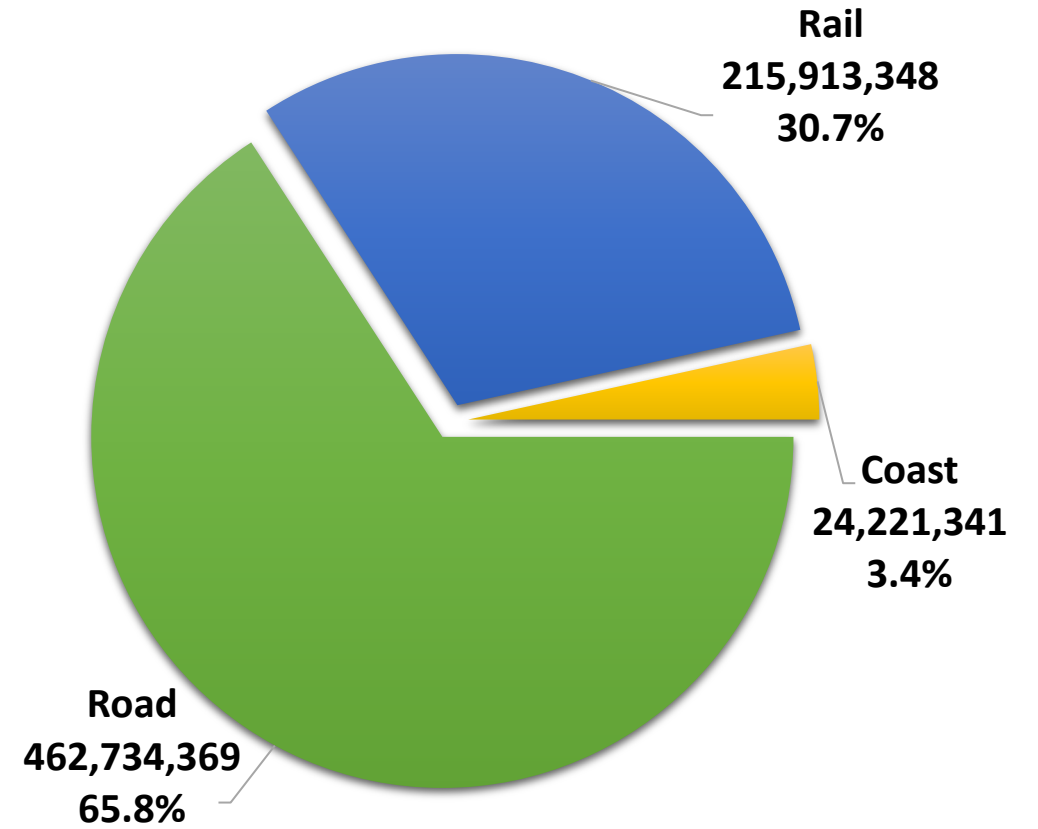


Linehaul “LCL” mode split per annum

Tonnes moved by mode



Tonnes over kilometres



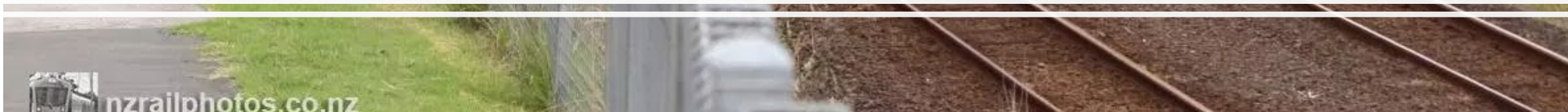


+2,000~H units p/a





+13,000~H units p/a



Road Profile

515 Around town vehicles

175 Linehaul combinations

+57,000~H unit loads p/a



DAILY FREIGHT

CaroTrans

MAINFREIGHT

CHEMCOURIERS

OWENS

2HOME



25 million kilos of exports 12 months


Per Kilo



Smaller
Faster

DEMAND

Larger
Slower



NZ requires great
inter-modal design



Greater resilience in NZ Inc - Supply Chain



Encourage continued regulatory assessment



AMTZ 410025

AMTZ 41

Amtrak

Amtrak

SLEEPING CAR 62013

Amtrak

4820





In a small nation industries must learn to accommodate each other





↙
SLOW
VEHICLE
BAY





Get It Done.

REFOUR

Questions



History has proved time and time again an effective transport system delivers prosperity.