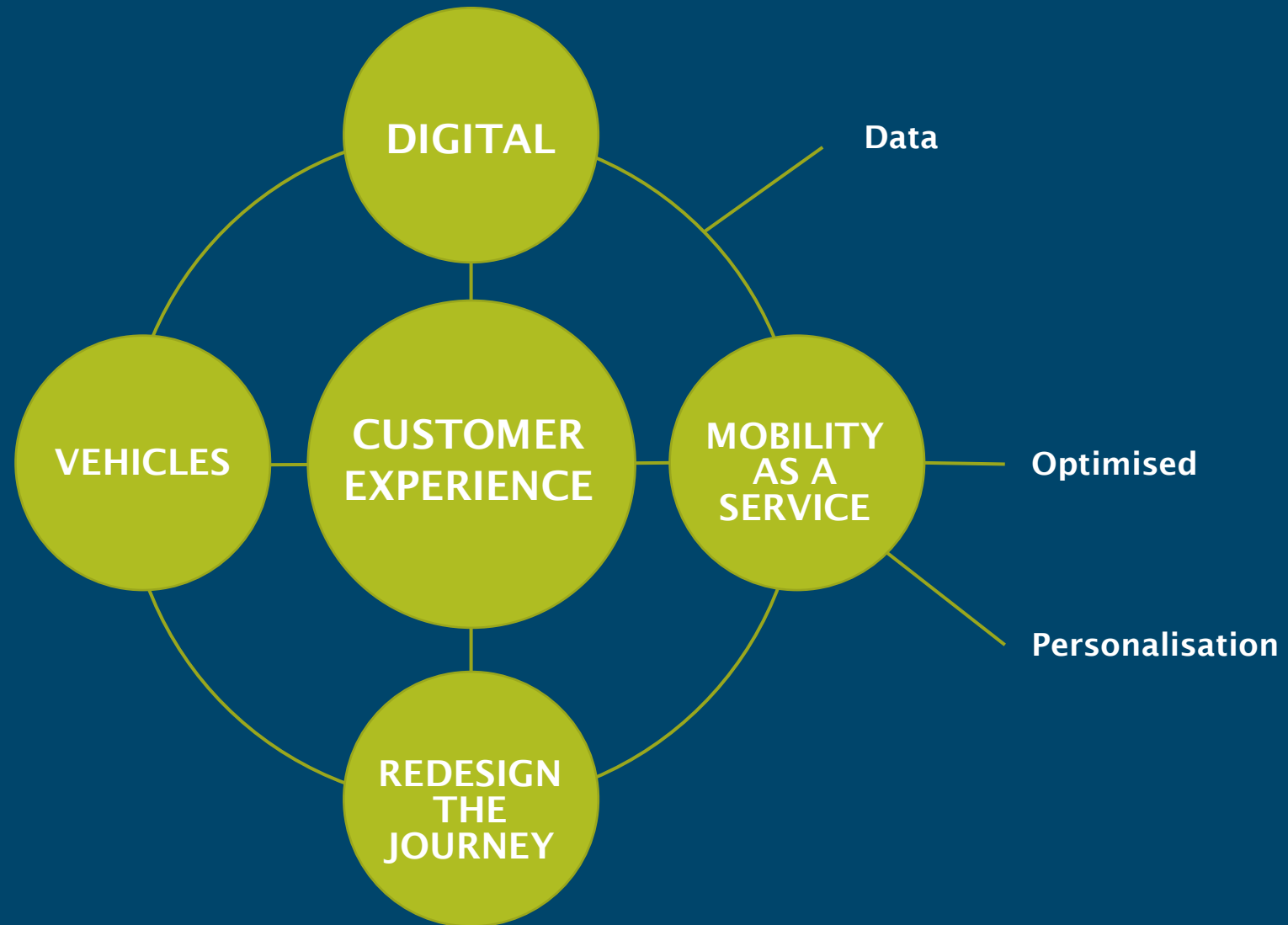


THE REGULATORY CHALLENGES FACILITATING MODERN TECHNOLOGY DEMANDS AND THE NZ TRANSPORT AGENCY'S PLAN TO ADDRESS THEM

Key changes to transport



Changing direction to be more responsive

One Connected
Transport System



People-centred
Services



Partnerships
for Prosperity



Our regulatory practice will change

We are looking at how technology will impact regulation at a system scale

Focus on
the harms
we are
managing

Identifying
big
problems
and fixing
them

Using our
entire tool
box more
effectively

Becoming
more of a
risk based
regulator

Review our
regulatory
systems

Weigh Right Programme

Levels the
playing field
for the
transport
industry

Improves
productivity
and road
safety

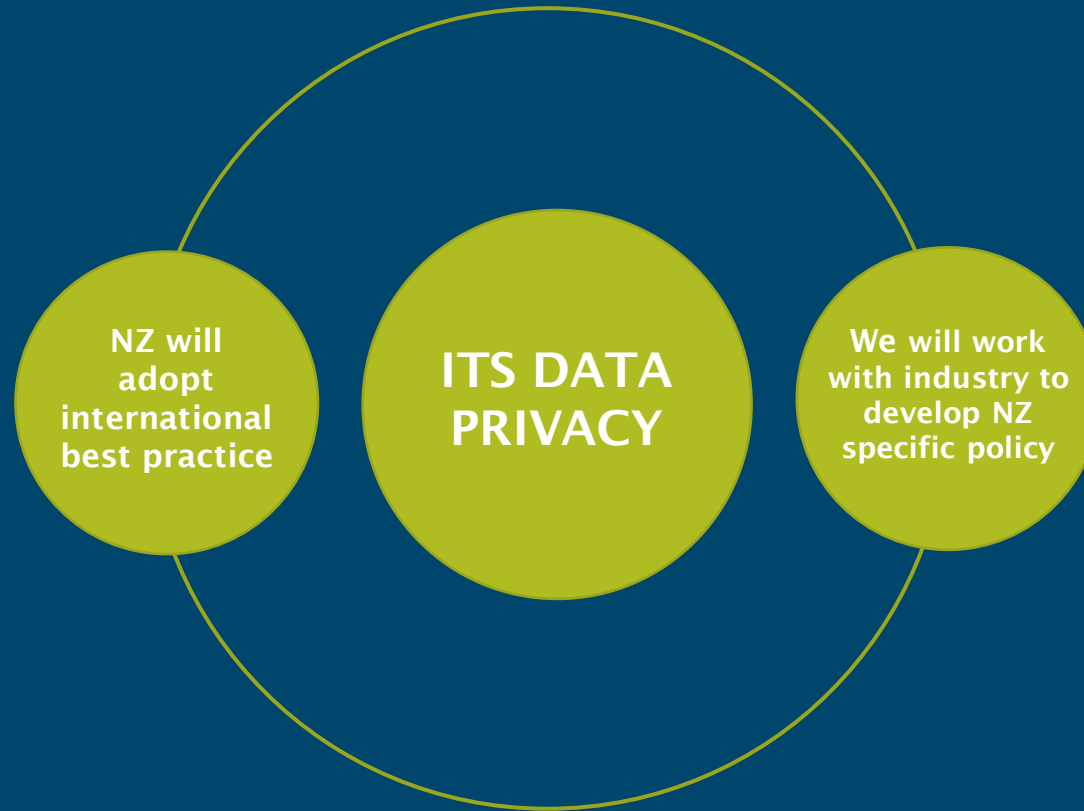
Ensures heavy
vehicle
operators pay
their fair share

Play Video

Managing intelligent transport system (ITS) data



Privacy assurance



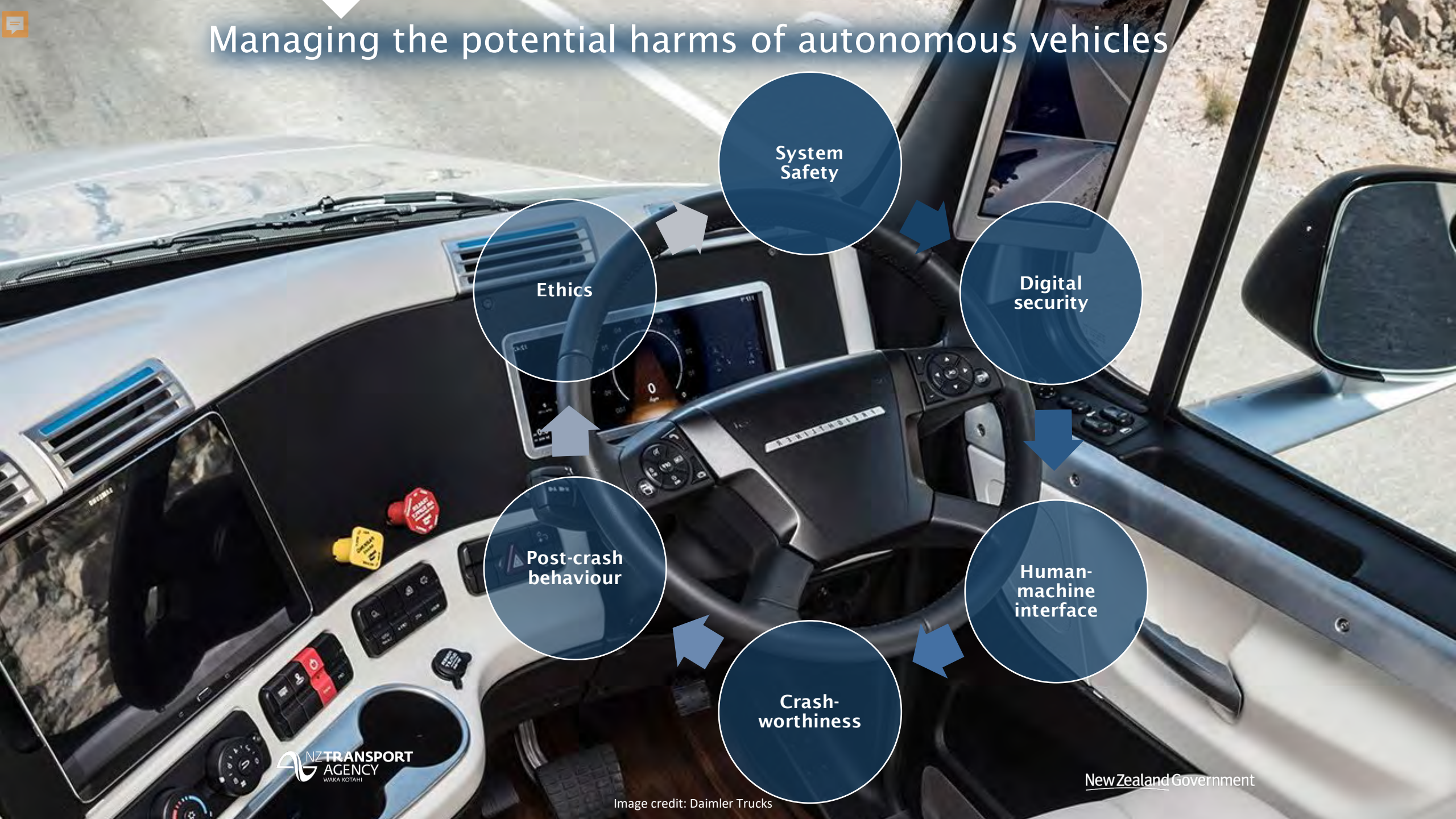
Assuring autonomous vehicle safety



Issues that we are exploring



Managing the potential harms of autonomous vehicles



System Safety

Digital security

Human-machine interface

Crash-worthiness

Post-crash behaviour

Ethics

Future regulatory options?

Current approach – no additional regulatory oversight, with an emphasis on existing safeguards in transport laws

Self-certification – manufacturers make a statement of compliance against high-level safety criteria developed by government

Pre-market approval – automated driving systems are certified by a government agency as meeting minimum standards

Accreditation – accredited party demonstrates it has identified and managed safety risks

Questions?

