

HPMV – A Local Authority Perspective

Dawn Inglis
Waipa DC



Managing a transport network...

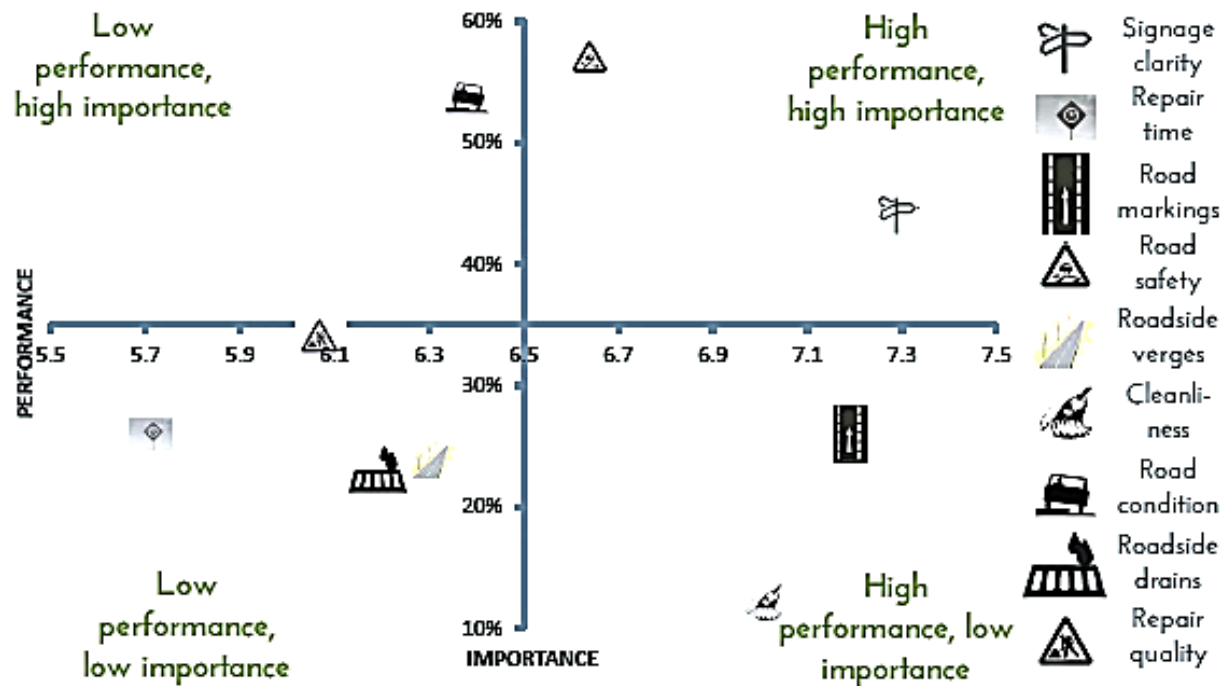
Funding, services, community

- FAR co-investment
- Cars consume space, trucks consume assets
- Balancing needs of community and other users
- We are trying to do the right thing!



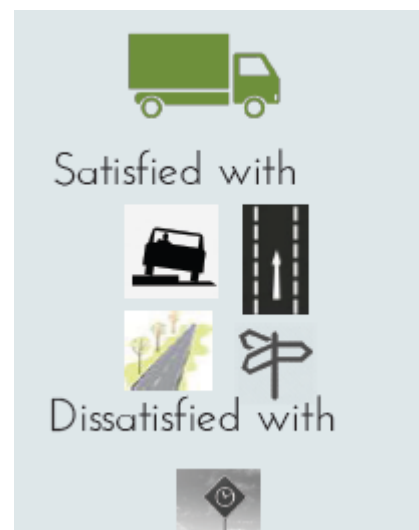
What is important to our residents?

ROADING: TOTAL RESULTS



What is important to you?

- Dissatisfied with repair times
- Otherwise relatively satisfied



Our initial HPMV work....

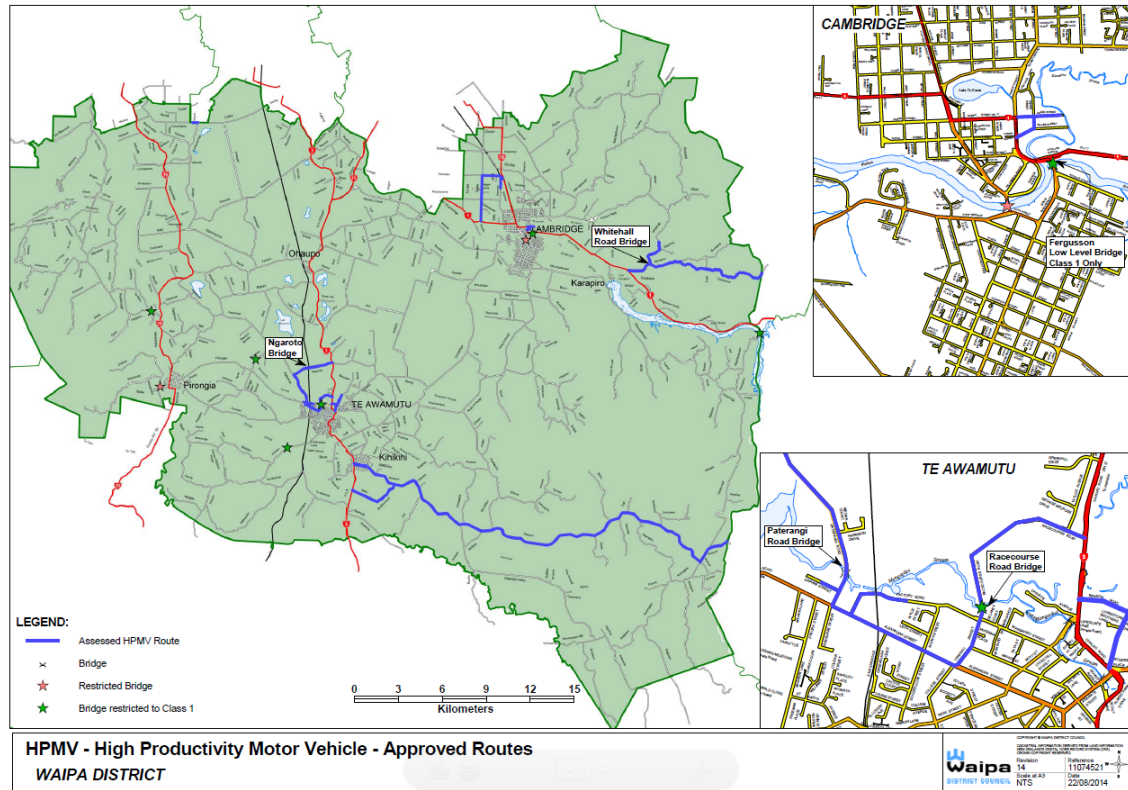
We listened to the debate...

- Government position
- Industry perspective
- Asset Manager conservatism
- Workshops held.....



Applications started coming in...

- Needed to take a position
- Listened to sage advice
- Supported in general



Lingering questions..

- Use of 'H' symbol
- Impact of heavier vehicles on peat subgrades
- Have we got the routes right?