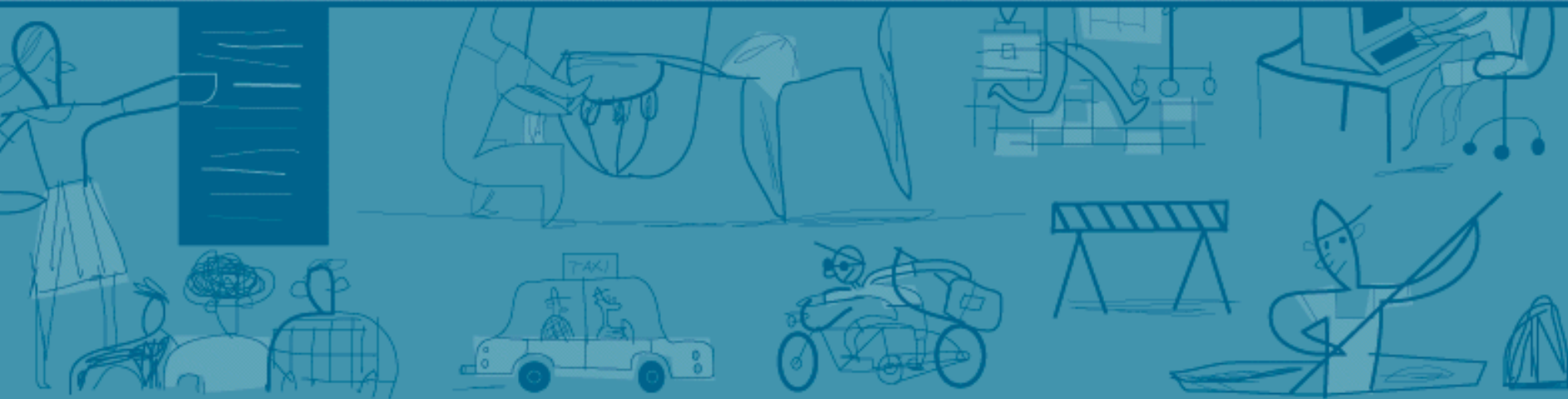


Health and Safety in Employment Seminar



1. The purpose of the Act

To promote the prevention of harm to all persons at work and in the vicinity by:

- promoting excellence in health and safety management
- recognising successful management is best achieved through good faith co-operation
- imposing duties on various people

Coverage

- The Act deals with all safety & health issues in all workplaces and during all work activity
- It applies to:
 - Factories or farms
 - Shops or offices
 - Construction or forestry
 - Work in aircraft or on ships
 - Railways
 - Work that moves e.g. in trucks or vans, on bikes or on foot
 - Non-paid work activity e.g. volunteers, on-the-job trainees

People with duties under the Act

- People in control of a workplace, including:
 - Employers
 - Self-employed
 - Contractors
 - Principals
- Employees also have responsibilities
- All have a duty to protect themselves and others

Employees, trainees & volunteers

- Air, rail, maritime employees
- Loaned employees
- People in on the job training or work experience
- Mobile workers
- Some volunteers

Also have responsibilities

Workplace

- Broad definition
- Anywhere an employee is doing work – whether on premises or not
- Incl. vehicle or commercial vessel used for business, any worksite, anywhere equipment being used
- Incl. lunchrooms, forecourts, corridors etc

People in or near a workplace

- Customers
- Delivery agents & couriers
- Sub-contractors
- Passers-by

All entitled to be safe

Reporting serious harm

- Serious harm should be immediately reported to OSH or MSA
- Self employed, principals must now:
 - Maintain register of accidents and serious harm
 - Notify serious harm

The tools OSH uses

- Dialogue
- Correspondence
- Improvement or prohibition notices
- Infringement notice
- Prosecution

Help and information

- WorkInfo Web site and Information Centre



- OSH publications
- ERS, ACC
- Unions
- Employer, industry associations